

UConn
ALUMNI

SEPT. 24 - OCT. 2, 2025

with optional pre-tour
Denver to Moab Aboard
Rocky Mountaineer

SOUTHWEST NATIONAL PARKS

Orbridge

Dear Alumni and Friends,

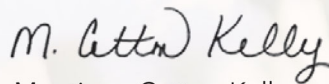
Join former students and friends on an awe-inspiring journey to the American Southwest, unveiling the mesmerizing geological marvels tucked within our treasured national parks. Traverse the timeless landscapes of Grand Canyon, Bryce Canyon and Zion, where the intricate dance of uplift and erosion has etched an extraordinary tapestry across the Southwest plateau. Delve into a world where hoodoos, slot canyons, arches, buttes and mesas stretch across the horizon in a breathtaking display of nature's artistry. Immerse yourself not just in the land's grandeur, but also in the stories of the resilient Americans who helped shape the history of "Red Rock Country."

With the guidance of an expert Orbridge Expedition Leader and the comforts of a private motor coach, there is no better way to visit our national parks.

PLUS: Join the optional pre-tour—Denver to Moab aboard *Rocky Mountaineer*—to take advantage of additional guided touring at Arches National Park and Canyonlands National Park. Enjoy nature's wondrous scenery in comfort and style during two days of rail travel in premium SilverLeaf class.

Space is limited. With significant savings of more than \$1,000 per couple, we anticipate this tour will fill quickly. To reserve, call our travel partner, Orbridge, at (866) 639-0079, visit uconn.orbridge.com, or return the attached reservation form.

Sincerely,



Montique Cotton Kelly
Chief People Officer and SVP for Alumni Relations
UConn Foundation

Itinerary and Highlights *(subject to change)*

Day 1: ARRIVE IN PHOENIX, AZ | SCOTTSDALE Upon arrival an Orbridge representative will be waiting to assist with your transfer to the hotel. Later join the group in the lobby to depart for Desert Botanical Garden for a special welcome dinner. Overnight: Scottsdale Marriott at McDowell Mountains (D)

Day 2: SCOTTSDALE | SEDONA | GRAND CANYON NATIONAL PARK Depart for Sedona's stunning Bell Rock Loop. Take advantage of photography opportunities of the magnificent landscape. Lunch is on your own in Sedona. Arrive to the Grand Canyon with the remainder of the day at leisure. Overnight: Grand Canyon Lodging (B)

Day 3: GRAND CANYON NATIONAL PARK Activities include independent time to explore the park or an optional helicopter flightseeing tour. Afterward gather for guided touring to Mather Point and the Visitor's Center. Overnight: Grand Canyon Lodging (B)

Day 4: GRAND CANYON NATIONAL PARK | PAGE | LAKE POWELL Stop at Desert View to see the iconic Watchtower. Continuing to Page lunch is on your own followed by guided touring at Antelope Canyon. This evening gather together for a relaxing dinner. Overnight: Lake Powell Resort (B,D)

Day 5: LAKE POWELL | BRYCE CANYON NATIONAL PARK, UT Set out for a rafting float trip down the calm waters of the Colorado River through Glen Canyon. Arriving to Lees Ferry there will be time for a market stop for lunch items and a picnic before departing for Bryce Canyon. Overnight: The Lodge at Bryce Canyon (B,L,D)

Day 6: BRYCE CANYON NATIONAL PARK | ZION NATIONAL PARK Experience the surreal and captivating landscape of intricately carved hoodoos, towering spires and vibrant rock formations of Bryce Canyon. See Bryce Amphitheater and Sunset and Sunrise Points. Depart for Zion after lunch. Overnight: Zion Park Lodge (B)

Day 7: ZION NATIONAL PARK Enjoy a full day for independent park touring. Activities may include hiking, ranger-led walks and a museum visit. Overnight: Zion Park Lodge (B,D)

Day 8: ZION NATIONAL PARK | LAS VEGAS, NV Venture into Zion for a final morning of exploration. Depart for Las Vegas. This evening gather for a special farewell reception. Overnight: The Westin Las Vegas Hotel & Spa (B,R)

Day 9: DEPART LAS VEGAS After breakfast transfer to the airport for flights home. (B)



(B = Breakfast, L = Lunch, D = Dinner, R = Reception)

Grand Canyon Flightseeing Excursion

Set out on a helicopter tour of the North, South and East rim including a flight over the confluence of the little Colorado River. Fly deeper into the canyon viewing immense buttes, majestic temples and spectacular side canyons. This incredible sightseeing opportunity has minimal impact on the nature of this remarkable destination.

Witness amazing landmarks while remaining conscious of the fragility of the environment. Discover awe-inspiring views of the Grand Canyon's eastern gorge aboard a first rate, environmentally-friendly EC130 aircraft complete with forward-facing stadium seating and a nearly 180-degree view.

This excursion must be purchased from Orbridge Guest Services in advance to guarantee availability. Purchase is non-refundable inside 90 days from departure.



What's Included

- 8 nights accommodations
- 8 breakfasts, 1 lunch and 4 dinners (including a welcome dinner) plus a special farewell reception
- Full guiding services of an Orbridge Expedition Leader as well as expert local guides
- Admission and park fees throughout
- All activities as described in the 9-day itinerary, unless noted otherwise
- Private deluxe motor coach with air conditioning and comfortable seating
- Luggage portage
- Gratuities to Orbridge Expedition Leader, local guides, drivers and porters
- Airport transfers for guests arriving and departing during the suggested times

Your Expedition Leader:

Enriched from the wealth of expertise provided by your Orbridge Expedition Leader, you'll bring home a deeper understanding of the flora, fauna, natural history and cultural narrative of the diverse parks of the American Southwest.

Orbridge

Activity Level: Guests should be able to enjoy a mile of outdoor walking at a moderate pace, be sure-footed on uneven ground, get in and out of a motor coach, and manage stairs without assistance.



Lake Powell

Accommodations *(subject to change)*

SCOTTSDALE MARRIOTT AT MCDOWELL MOUNTAINS

Delight in the well-appointed comforts of this modern hotel, featuring breathtaking mountain views.



GRAND CANYON NATIONAL PARK LODGING

Confirmed by the National Park Service, you'll stay at one of the following Grand Canyon properties: Maswik Lodge, Kachina Lodge or Thunderbird Lodge. Each offers comfortable lodging and modern amenities.

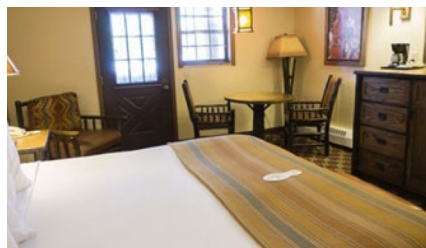
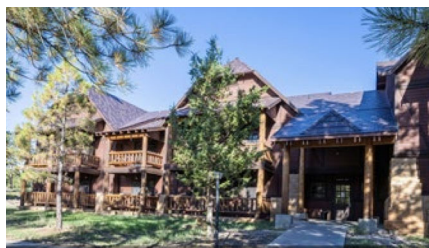
LAKE POWELL RESORT

The property's lake-view rooms with Native American flair are an ideal retreat after a day full of adventurous fun.



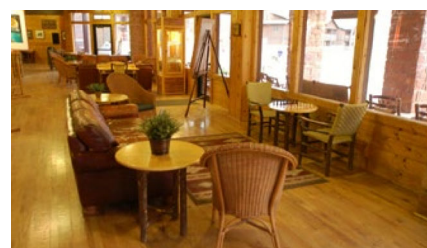
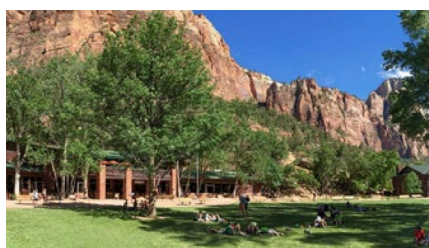
THE LODGE AT BRYCE CANYON

Enjoy recently remodeled rooms providing contemporary comforts with an authentic western park experience.



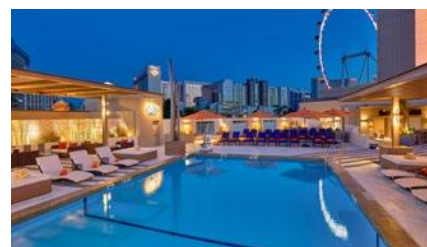
ZION PARK LODGE

The only in-park lodging at Zion National Park, this property is serenely nestled among towering red rock cliffs.



THE WESTIN LAS VEGAS HOTEL & SPA

This hotel features modern guest rooms, outdoor heated pool, fitness studio, lobby lounge and 24-hour bistro.



Optional Pre-Tour

Denver to Moab Aboard *Rocky Mountaineer*

Travel by rail from the mile-high city of Denver to the red rock formations of Moab by joining a luxury train journey to America's Southwest—a region steeped in history and full of opportunities to explore.



Day +1: ARRIVE IN DENVER, CO Settle in and relax before the exciting journey ahead.

Overnight: Magnolia Denver

Day +2: DENVER | ROCKY MOUNTAINEER | GLENWOOD SPRINGS Embark upon the *Rocky Mountaineer* for two days of extraordinary landscapes between Denver and Moab. This rail route is filled with highlights best seen by train, including Ruby Canyon and Mount Logan. Pass the towering Rockies on the way to Glenwood Springs and celebrate crossing the Continental Divide with a sparkling wine toast. Tour along the Colorado River through picturesque Byers Canyon and Gore Canyon.

Overnight: Glenwood Springs Lodging (B,L)

Day +3: GLENWOOD SPRINGS | ROCKY MOUNTAINEER | MOAB, UT | CANYONLANDS NATIONAL PARK Travel southwest for another day of awe-inspiring views of colorful archways and astounding rock formations. Savor a two-course hot breakfast while watching the morning light bounce off the magnificent Parachute Creek and Mount Logan. As the train approaches Moab, notice the brilliant red sandstone backdrop and get an initial glimpse of iconic Arches National Park.

Overnight: Red Cliffs Lodge (B)

Day +4: MOAB | ARCHES NATIONAL PARK | MOAB Enjoy a full day of independent touring in Arches National Park. Observe the myriad of unusual rock formations, including Balanced Rock and the world famous Delicate Arch.

Overnight: Red Cliffs Lodge (B)

Day +5: MOAB | GRAND JUNCTION, CO | FLIGHT TO PHOENIX, AZ | MAIN PROGRAM BEGINS After breakfast transfer to Grand Junction for the flight to Phoenix to join the main program. (B)

What's Included

- 1 night at the Magnolia Denver (or similar)
- 1 night in Glenwood Springs (hotel determined by *Rocky Mountaineer*)
- 2 nights at Red Cliffs Lodge (or similar)
- 4 breakfasts and 1 lunch
- Alcoholic beverages while aboard the train
- *Rocky Mountaineer* rail transport with SilverLeaf or SilverLeaf Plus Service[†]
- Guiding services of an Orbridge Expedition Leader
- Admission to, and guided touring of, Arches and Canyonlands National Parks
- Private transportation for included park activities
- Gratuities to *Rocky Mountaineer* staff, local guides, drivers and porters
- Internal airfare from Grand Junction to Phoenix including luggage fees for one regular-sized bag (under 50 pounds)
- Airport transfer for guests arriving during the suggested times

[†]The upgrade to SilverLeaf Plus provides access to a lounge car with an outdoor viewing area, enhanced meals and premium alcohol.

SOUTHWEST NATIONAL PARKS

SEPTEMBER 24 - OCTOBER 2, 2025

Pre-Tour: September 20-24, 2025

Denver to Moab Aboard *Rocky Mountaineer*

Reserve by Credit Card:

Online: uconn.orbridge.com

Phone: (866) 639-0079

Fax: (206) 452-5655

Reserve by Check:

Made payable to **Orbridge, LLC**

Mail to: Orbridge, P.O. Box 1376

Poulsbo, WA 98370

Category	Standard Rate	Special Rate*
Double	\$5,899	\$5,395
Single	\$7,499	\$6,995
Denver to Moab Pre-Tour*		
Category	Standard Rate	Special Rate*
SilverLeaf	\$4,499	\$4,295
SilverLeaf Plus	\$5,199	\$4,995
SilverLeaf Single	\$5,999	\$5,795
SilverLeaf Plus Single	\$6,799	\$6,595

Rate is per person based on double occupancy except where noted as Single, in U.S. dollars.

GUEST INFORMATION:

Guest #1 Name (Title/Salutation): _____

Email: _____ Class Year: _____

Home Phone: _____ Alt. Phone: _____

Address: _____

City: _____ State: _____ Zip: _____

Guest #2 Name (Title/Salutation): _____

Email: _____ Class Year: _____

Home Phone: _____ Alt. Phone: _____

DEPOSIT PAYMENT:

Check ACH (Automated Clearing House) MasterCard/Visa American Express Discover

Card #: _____ Exp. Date: _____ CW: _____

Name (as printed on card): _____

Billing Address (if different from above): _____

City: _____ State: _____ Zip: _____

DEPOSIT:

_____ guests joining pre-tour (\$500/person) +

_____ guests joining program (\$850/person) = **TOTAL DEPOSIT: \$** _____


OPTIONAL GRAND CANYON HELICOPTER EXCURSION (added to your final invoice):

_____ guests joining optional excursion (\$389/person)

Participants' dressed weight: Guest #1 _____ Guest #2 _____ (for flights only; to balance the aircraft)

I/we have read, understand, and agree to the full Terms & Conditions at terms.orbridge.com; and I/we agree that Orbridge, LLC is authorized to charge my credit card above and/or take my/our deposit for this program.

Signature: _____ Date: _____

 Orbridge takes seriously the responsibility to minimize our global environmental impact. Each year we plant 100,000 trees in U.S. State Forests with afforestation needs as an ongoing initiative among our evolving sustainability efforts. Learn more at orbridge.com/going-green.

*Special group rate; limited offer. Airfare not included. Single availability limited. For the pre-tour, internal airfare from Grand Junction to Phoenix is included. Airfare otherwise not included. **A complement to the educational component of this journey, Expedition Libraries are curated collections of useful resources and background reading tailored to this program. Place your deposit on or before the specified date, and one Expedition Library per household will be sent after receipt of final payment. Libraries may be purchased; please call for details.

CUT HERE



UConn Alumni Relations
 2384 Alumni Drive, Unit 3053
 Storrs, CT 06269-3053

SOUTHWEST NATIONAL PARKS

SEPTEMBER 24 - OCTOBER 2, 2025

FREE EXPEDITION LIBRARY
 AN EXCLUSIVE EARLY
 RESERVATION BONUS

Special Alumni Rate:
Save more than \$1,000 per couple
30-day refund guarantee

Reserve by
March 14, 2025**

The UConn Foundation, Inc. ("Foundation") is not the travel program tour operator. The Foundation does not own or operate any entity which provides goods or services for this travel program. Providers of transportation, hotel accommodations, restaurant and any other goods or services for this program are independent contractors not under the control of the Foundation. The Foundation is not liable for any wrongful, negligent, willful, arbitrary or other acts or omissions of any independent contractors, their employees, agents, servants or representatives or of any other third party. The Foundation is not responsible for any injury, loss, death, inconvenience, delay or damage to person or property whatsoever arising from or related to the travel program or the provision of any goods or services thereunder whether resulting from, but not limited to, acts of God, acts of government, acts of war, riot, civil unrest, insurrection or revolt, criminal or terrorist activities of any kind, strikes or other labor activities, flood, cyclone, hurricane, fire, earthquake or other natural occurrence, weather event or disaster, animals, food poisoning, illness, disease, mechanical or other failure of aircraft, vessels or other means of transportation, failure of any transportation mechanism to arrive or depart timely or safely, termination or cancellation of services by suppliers for any reason, missed carrier connections, overbooking or downgrading of services or accommodations, substitution of hotels or of common carrier equipment, with or without notice, or for any additional expenses occasioned thereby.

The Foundation shall not be responsible for alteration in the itinerary as deemed necessary for carrying out the tour and the right is reserved to change the itinerary or trip features at any time and for any reason, with or without notice. The right is also reserved to decline to accept or to retain any person as a member of the tour should such person's health, actions or general deportment impede the operation of the tour or the rights or welfare of the other participants. No refund will be made for the unused portion of any tour.

By paying the deposit or participating in this travel program applicants and participants accept in full all of the terms and conditions set forth herein and on the tour operator's website at www.orbridge.com.

PRSRT STD
 U.S. POSTAGE
 PAID
 PERMIT NO. 825
 SAN DIEGO, CA